



TECHNOLOGY.
PRODUCTS.
PEOPLE.





Industry-leading rodent control solutions. That's Liphatech.

Finding the most effective and efficient solutions for the world's rodent control problems — and helping its customers succeed — has made Liphatech, Inc. the industry leader.

No matter how complex or challenging a rodent control problem may be, pest management professionals have come to rely on the quality, innovation and expertise of Liphatech.

Throughout its history, Liphatech has focused exclusively on the development and production of rodenticides and related rodent control products. The result? The industry's most advanced technology, along with a powerful commitment to deliver the highest levels of customer service and technical support.

Bolstered by ongoing research, our innovations have consistently set the standard for the rodent control industry. Liphatech's R&D successes include such well-known and industry-leading products as Generation®, FirstStrike®, BlueMax™, Maki®, and Aegis®.

A HISTORY OF ADVANCES.

1967

Chlorophacinone
Active ingredient in our first multi-feed anticoagulant known as **Rozol®** – patented by Liphatech.

1976

Bromadiolone
Our first single-feed anticoagulant rodenticide, later branded under the **Maki®** name patented by Liphatech.

1988

Difethialone
Second-generation single-feed anticoagulant discovered and patented by Liphatech – still most advanced active ingredient today.

1995

Generation®
The active ingredient difethialone is combined with food-grade grains for maximum palatability.

2000

Aegis® Bait Stations
The industry's most effective and fast-to-service rodent bait station line.

2001

Aegis® Modular System
The option of using rodenticides, snap traps or glue boards for control of rodents.

Product Guide

Rodenticides & Bait Stations



Our products meet stringent requirements and go through a rigorous quality control process.



Every employee ensures each block, pouch, pellet, and station meets the highest quality levels.



Our R&D facilities guarantee we are on the cutting edge of innovation.



One of our recent innovations is FirstStrike® soft bait, revolutionizing rodent control.

Our Pest Management Mission

Liphatech creates successful partnerships with Pest Management Professionals by offering superior and innovative rodent-control products.

We strive to consistently provide outstanding and fast customer service to assist PMPs in improving the quality of human life.

We have innovation down to a science.

It all began in 1946 when Liphatech's original parent company began as a pharmaceutical company in France. Through the 1960s and 70s, Liphatech's research led to the development of two anticoagulants into the market, chlorophacinone and bromadiolone respectively.

The innovations continued at the state-of-the-art Milwaukee facility, which opened in 1987. Ongoing research there, and in Europe, resulted in the discovery of difethialone, the industry's most advanced single-feed anticoagulant.

Since 2002, Liphatech has been a proud member of the De Sangosse group, a world-wide leader in manufacturing and distributing agrosupplies and pest control products. By providing global support, we are able to serve the pest control industry — whether you're a large or small-size business. And just as you'd expect from a global leader, Liphatech continues to invest substantial resources to research and develop the rodent control products of the future.

2004

Aegis®-RP Bait Station
Multiple uses, flexible mounting options and unmatched effectiveness in one complete quick-to-service package.

2005

BlueMax™
A highly durable maintenance block offering mold protection and durability.

2008

FirstStrike®
Soft bait with highly effective results in combating persistent rodents, extremely palatable and doesn't melt in hot conditions.

2010

SecurePoint™ Technology
Available in Aegis mouse stations holds bait securely in station.

2010

Aegis®-RP Anchor Station
Pre-assembled to a durable concrete base — eliminating hardware and labor costs.



Generation®	FirstStrike®	BlueMax™
<p>Active Ingredient: Difethialone (Liphatech exclusive)</p> <ul style="list-style-type: none"> ■ Single-feed anticoagulant, Vitamin K₁ is Antidote ■ 25 PPM effectiveness ■ Lower active ingredient concentration enhances palatability ■ 1/5 oz. is LD₅₀ for an adult rat, 1/75 oz. for an adult mouse 	<p>Active Ingredient: Difethialone (Liphatech exclusive)</p> <ul style="list-style-type: none"> ■ Single-feed anticoagulant, Vitamin K₁ is Antidote ■ 25 PPM effectiveness ■ Lower active ingredient concentration enhances palatability ■ 1/5 oz. is LD₅₀ for an adult rat, 1/75 oz. for an adult mouse 	<p>Active Ingredient: Difethialone (Liphatech exclusive)</p> <ul style="list-style-type: none"> ■ Single-feed anticoagulant, Vitamin K₁ is Antidote ■ 25 PPM effectiveness ■ Lower active ingredient concentration enhances palatability ■ 1/5 oz. is LD₅₀ for an adult rat, 1/75 oz. for an adult mouse
<p>Best Uses:</p> <ul style="list-style-type: none"> – Best mini block for results – Versatile formulations for multiple situations 	<p>Best Uses:</p> <ul style="list-style-type: none"> – Ideal for combating lingering rodents, tough infestations or even for everyday use – High acceptance by rodents, even when competing food is available – Does not melt in hot temperatures 	<p>Best Uses:</p> <ul style="list-style-type: none"> – Use block bait where crumbs and scatter are a concern – Place block bait in areas with mold potential – In humid, moist baiting conditions – Use meal to draw rodents off competing food sources
<p>Bait Formulations:</p> <ul style="list-style-type: none"> ■ Mini Blocks <ul style="list-style-type: none"> – Multiple edges to encourage feeding – Less wax content to keep palatable – Whole millet seed appeals towards natural seed preference for mice – Can be secured in a tamper-resistant bait station ■ Paraffinized Pellets – Bulk <ul style="list-style-type: none"> – Appeals to a rodent's natural seed-eating behavior – Contains paraffin for moisture tolerance – Use for mouse control where pellet hoarding will not cause concern ■ Paraffinized Pellets – Place Packs <ul style="list-style-type: none"> – Minimize applicator contact with the rodenticide – Pre-measured doses promote cost effectiveness – Minimizes bait melting 	<p>Bait Formulations:</p> <ul style="list-style-type: none"> ■ Soft Bait <ul style="list-style-type: none"> – 10 g (1/3 oz.) pouch size offers flexible dosing through single or multiple pouch placements – Aroma escapes through packet to attract rodents and encourage feeding – Easy clean up as rodents consume the bait instead of scattering it – Can be secured in a tamper-resistant bait station 	<p>Bait Formulations:</p> <ul style="list-style-type: none"> ■ Mini Blocks <ul style="list-style-type: none"> – Multiple edges to encourage feeding – Optimum wax content for maximum durability – Less crumbs inside the bait station – Less scatter outside the bait station – Can be secured in a tamper-resistant bait station ■ Meal – Bulk <ul style="list-style-type: none"> – Draws rodents off competing food sources – Allows PMP to decide application amount – Effective in Norway rat burrows with low kick-out potential
<p>Special Features:</p> <ul style="list-style-type: none"> – Contains less wax and dye to enhance palatability – Convenient 20 g size means lower cost per placement – Great taste that rodents can't resist 	<p>Special Features:</p> <ul style="list-style-type: none"> – Bittering agent added to help avoid accidental consumption – Contains no wax, enhancing its palatability to rats and mice – Easily identify if rats or mice are eating the bait based on feeding patterns – Contains food grade oil and grains; nut-free 	<p>Special Features:</p> <ul style="list-style-type: none"> – Blue marker dye, can be seen in droppings – Unique preservatives for maximum mold prevention – Blocks are an excellent maintenance bait for audited accounts

Rodenticide Products and Monitoring Bait



rozol®



NoTox



Maki®	Rozol®	NoTox™
<p>Active Ingredient: Bromadiolone (Liphatech patented)</p> <ul style="list-style-type: none"> ■ Single-feed anticoagulant, Vitamin K₁ is Antidote ■ 1/4 oz. is LD₅₀ for an adult rat, 1/40 oz. for an adult mouse 	<p>Active Ingredient: Chlorophacinone (Liphatech patented)</p> <ul style="list-style-type: none"> ■ Multiple-feed anticoagulant, Vitamin K₁ is Antidote 	<p>Active Ingredient: NONE</p> <ul style="list-style-type: none"> ■ NoTox blocks do not contain active ingredient
<p>Best Uses:</p> <ul style="list-style-type: none"> – Best control for Norway rats – Blocks hold up well in sewers – Paraffinized pellets resist moisture in Norway rat burrows – Ideal for rotation with Generation, BlueMax or Rozol 	<p>Best Uses:</p> <ul style="list-style-type: none"> – For areas inaccessible to non-targets – Use when conventional baits may not be appropriate 	<p>Best Uses:</p> <ul style="list-style-type: none"> – Monitoring activity of rats and mice in and around homes, industrial, commercial, agricultural and public buildings. – Also may be used in transport vehicles and in and around related port or terminal buildings.
<p>Bait Formulations:</p> <ul style="list-style-type: none"> ■ Mini Blocks <ul style="list-style-type: none"> – Multiple edges to encourage feeding – Can be secured in a tamper-resistant bait station ■ Paraffinized Block – 1 lb. <ul style="list-style-type: none"> – Easily divided into 2, 4, 6, or 8 oz. portions – Tolerant of high humidity/moisture – Ideal for treating rats in sewers ■ Paraffinized Pellets – Bulk <ul style="list-style-type: none"> – Best choice for Norway rat burrows – Appeals to a rodent's natural seed-eating behavior – Contains paraffin for maximum moisture tolerance – Use for mouse control where pellet hoarding will not cause concern ■ Paraffinized Pellets – Place Packs <ul style="list-style-type: none"> – Minimize applicator contact with the rodenticide – Pre-measured doses promote cost effectiveness – Minimizes bait melting 	<p>Bait Formulations:</p> <ul style="list-style-type: none"> ■ Tracking Powder <ul style="list-style-type: none"> – Restricted Use Pesticides – Adheres to rodent's feet and fur – Place in areas inaccessible to children, pets and food – Treat indoor burrows and apply "patches" on runways 	<p>Bait Formulations:</p> <ul style="list-style-type: none"> ■ Mini blocks <ul style="list-style-type: none"> – Inspect bait regularly for signs of rodent activity. – If signs of gnawing or eating of bait are noted, this bait should be replaced with toxic bait or traps until no new signs of rodent activity occur.
<p>Special Features:</p> <ul style="list-style-type: none"> – Contains whole food grade grains – Trusted brand for decades 	<p>Special Features:</p> <ul style="list-style-type: none"> – Tracking powder is available in blue and white formulations 	<p>Special Features:</p> <ul style="list-style-type: none"> – Red dye is highly visible in rodent droppings – Convenient 20 g size means lower cost per placement



Aegis[®] Bait Stations

All bait boxes may look the same, but features in the Aegis family of products prove that Aegis delivers the highest quality quick to service station at a competitive price. You can get in, get out and get on with servicing your customers.



One Key—The Aegis key easily opens all Aegis stations.



Savings—No assembly time means more servicing time.



Longevity—Door-like hinges are long lasting.



Encouragement—See-through design improves rodent entry.



Less Travel—A shorter distance between the rodent and the bait means success.



Accessible—Rat stations open away from the wall so you don't have to fight against the lid.

Aegis[®] Mouse

- All black or with clear lid
- Twice the capacity of most mouse stations
- Specially designed to hold FirstStrike[®]

Bait Station Products



Aegis®-RP

- Available in black or gray
- Use with trap or rodenticide
- Lid opens away from wall
- Compact size
- Install either horizontally or vertically
- “See through” design lures rodents



Aegis®-RP Anchor

- Available in black with an integrated concrete block
- Two bolts embedded into concrete
- Great looking professional design
- Pre-assembled station eliminates set-up hassle and costs
- Install either horizontally or vertically



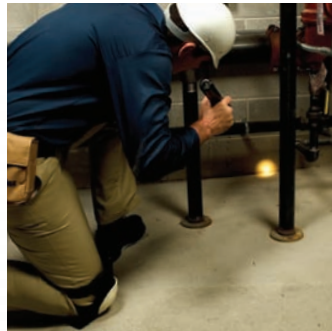
Aegis® Rat

- Available in black, white (Cool Box) or black with clear lid
- Double-tunnel design for improved bait consumption



Aegis® Modular

- Available in black
- Heavy duty station
- Use with bait, traps or glue boards



Conduct a thorough inspection to locate rodent nests, feeding sites, runways and entry points.



Liphatech products are designed to meet the wide variety of situations faced by rodent control professionals.



Work smarter. Take advantage of technology, such as Aegis bar coding, to expedite service.

Call it technical support. Or call it a team of industry experts.

No matter how complex or challenging your rodent control problem, count on Liphatech for the right solution.

At Liphatech, we are known for our advanced chemistry, biology and technology. But our technical support is every bit as advanced. That's why Liphatech has assembled the industry's most experienced and knowledgeable sales force. They're all highly-trained and qualified to help you solve your toughest rodent control problems.

Whether you need hands-on guidance for a specific rodent control issue or have a simple question, we're always here with accurate answers to the technical issues you face every day. Additionally, Liphatech can provide specialized training and technical materials.

With the full support of Liphatech, you can serve your customers more effectively.

Liphatech, Inc.
3600 W. Elm Street
Milwaukee, WI 53209
USA

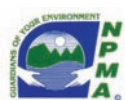
Toll-free customer service:
888-331-79000

Fax: 414-247-8166

Email:
rodentcontrol@liphatech.com

Web:
www.liphatech.com

Liphatech is proud to support several industry associations, including:



Advanced technology. Effective control.

For additional information, call **888-331-7900** or visit **www.liphatech.com**